

CENTRAL ILLINOIS FARM HERITAGE TRACTOR CLUB



2011 Club officers

President

Dan Wiest
309-249-2960
wiestdv@hughes.net

Vice President

Dean Buchholz
309-243-1016
twobuchs@yahoo.com

Secretary

Charlotte Mettes
309-274-4003

Asst. Secretary

Joanne McTaggart
309-579-2833

Treasurer

Paul McKim
309-678-2901
pemckim@cs.com

Webmaster

Terry Beachler
309-579-2209
terryb@beachlers.com

Calendar Items

February, 21st Club Meeting at
Pearce Community Center 6:00pm
Theme for the month - Charlie Mettes is
providing Barbecues/Chips for the
meeting. Membership open for food
and fun, bring desserts or your
appetite!!

Market Report 2/10/11

Corn \$6.97
Soybeans \$14.47
Wheat \$8.79



February 2011 Newsletter

January Treasurers Report

Income \$3,785.00 ytd
Expense \$914.00 ytd
(Federal and state filing fees, copies,
postage, artwork, room rental)
Balance \$2,871

We have 59 member families as of
Feb 6

President column

Greetings,

As I write this column, I am looking
out the window on a cold blustery
winter day. But As Gertie the
Groundhog has just predicted, we are
going to have an early Spring. Like a
fresh new year is underway, so is the
bustling activity in your club.
Remember it is what you make it, and
I hope you can make the time to come
out and enjoy it. Also, we will declare
a winner at the next club meeting
regarding the Red vs. Green at the Ag
day on Feb 12th. We will see how
many more Red tractors will be at the
display. It could be a close call. I
know most of the Green ones will be
tucked away for the winter, and the
red ones will be out plowing and
working in the snow, so we shall see
who wins!! I wonder if Gertie were to
pick Red or Green what her favorite
would be???

Dan Wiest

Vice President Note

Hello everybody.

I just spent the day using my Green
tractor to clear away all the snow
from last night's blizzard, oh by the
way, did I mention I can't wait until
spring. Good news is that spring is
right around the corner.... I sure
hope that groundhog is right Things
are progressing well with the new
club; Paul and Terry have been busy
filing paperwork to make things
official - Thanks guys! Remember
that the new club logo is going to be
voted on by club members at the
February meeting please submit
your ideas to Kevin as soon as
possible. It's hard to believe we are
already planning the Heritage Days
show in August, feel free to submit
any ideas that you may have for the
show to me. See you at the next
meeting.

Dean Buchholz

Secretary's Say

Well, 2011 is here and I'm looking
forward to this year. This is going to
be something new for me. For those
who don't know me, my name is
Charlotte Mettes; also everyone calls
me (Charlie). I'll be the secretary for
the C.I.F.H.T.C. I look forward to
getting involved in doing things for
the club, also looking forward to the
upcoming tractor show in August. I
would like to invite all the women to
think about things we can do and get
for our silent auction this year. We
need things for the ladies too. I think
this will be a great year. I am looking
forward to meeting everyone at the
monthly meetings or at the tractor
show in August.

Sincerely
Charlie

The Sale Barn

Your ad here; Contact Kevin Engquist 309-579-3293

For Sale: Squirrel corn.
Call Clint Nauman at 309-274-4138
Wanted: Good working air compressor, 2 stage with approx. 80 gallon tank.
Contact Dean Buchholz 309-243-1016
Wanted: Good Working Field Cultivator (Vibra-shank) with attached harrow about 14 ft. -
Contact Dan Wiest (309) 249-2960

2010 Show DVD is available

\$6. Each Only a handful left.
Contact Kim Engquist, or see her at the meeting.



Terry's Joke Corner

Q: Why are farmers respected?

A: Because they are out standing in their field.

New Members

Alan Johnson

Next meeting

February 21st at 6:00pm at Pearce Community Center. Now here is a glance at the agenda for the meeting

- 6pm Call to Order
- Officer Reports
- Post Show report
- Coming Events
- Meeting Ends, Fun Begins
- Terry Beachler Presents
- Food and Discussion

Spoon River Ag Museum

News

www.SpoonRiverAgMuseum.com

Tractor Trivia

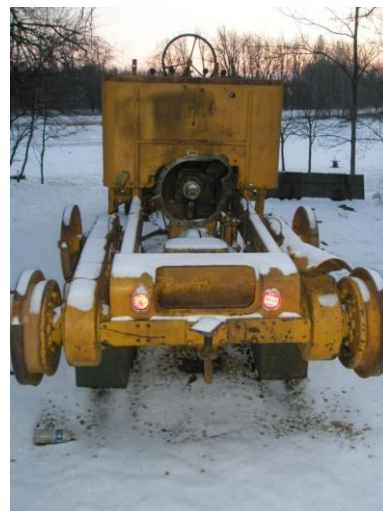
What is the model of John Deere's first diesel engine powered tractor?

- (a) Model G
- (b) Model 80
- (c) Model R
- (d) Model 70

Cat 212 project update

Thought you all might want to see a couple pictures of the 1950 Cat 212 MG. Marty and I went out to Rob's place Thursday night and checked it out. The main components (like engine) have been removed and are getting repaired. Apparently the MG is in pretty rough shape so Rob is having to do a lot parts locating to bring it back to a level that meets his standards.

Dean



Watch next month for more updates.

